

HARTMAN RESERVE INTERPRETIVE CENTER



657 Reserve Dr, Cedar Falls, IA 50613 hartmanreserve.org
Contact Gretchen Callaway **Email** gcallaway@co.black-hawk.ia.us
Ph 319-277-2187 **Fax** 319-277-4420

Overlooking the wooded bluff, the Interpretive Center's Community Room can accommodate up to 134 people. This makes it an ideal size for business meetings and small receptions. The updated modern look of the building adds to your event, not to mention the endless photo opportunities throughout the forest. All facilities at Hartman Reserve Nature Center are handicapped-accessible. Rental of the center includes the use of the surrounding grounds and parking lot. WiFi is also available.

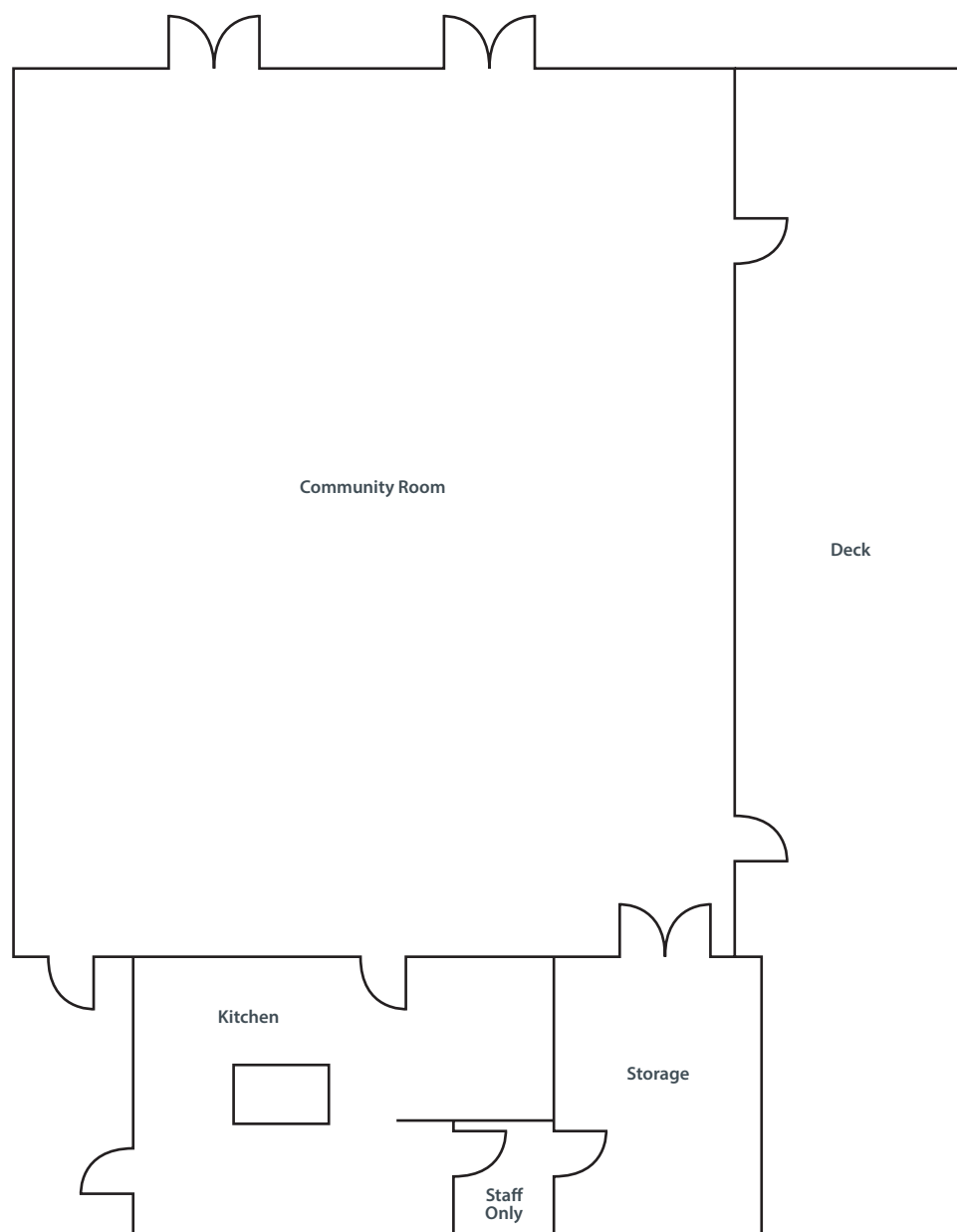
The center also has a full kitchen allowing you to prepare your own food or have your event catered. Alcoholic beverages allowed include can/bottle beer, wine and champagne. All events with alcoholic consumption or after 5 pm must have a uniformed security person present.

All after hour rentals will end by 10:30 pm.

Parking is limited and includes 50 spaces as well as 4 handicap and 6 loading & unloading spaces next to the building. Parking is not allowed on the driveways from the street to the parking lot or the parking lot to the building area. Overflow parking is available at Riverhills School evenings and weekends.

ROOM CAPACITY

Meeting Room	Sq. Ft.	Dimension	Reception	Banquet	Theater	Classroom	U Shape
Community Rm	2002	40.5x49.5	134	134	–	134	–



HARTMAN RESERVE INTERPRETIVE CENTER

Notes:

