



1227 W 27th St, Cedar Falls, IA 50614 [www.events.uni.edu](http://www.events.uni.edu)  
**Ph** 319-273-5888 **Email** [mike.bobeldyk@uni.edu](mailto:mike.bobeldyk@uni.edu)  
**Contact** Mike Bobeldyk

Host your conference or event on the beautiful campus of the University of Northern Iowa! UNI's campus offers a vast range of options for meeting space including auditoriums, lecture halls and classrooms. Our most commonly used facilities for meetings and events include Commons, Gallagher Bluedorn and Maucker Union, in addition to our athletic facilities. Overnight accommodations are generally available on a limited basis in the residence halls, call for availability. Full-service planning is available which includes online registration and payment, speaker arrangements, travel arrangements, facility coordination and more. On-site dining facilities and catering is provided. No outside food or beverages allowed. No security guard required.

#### FEATURES

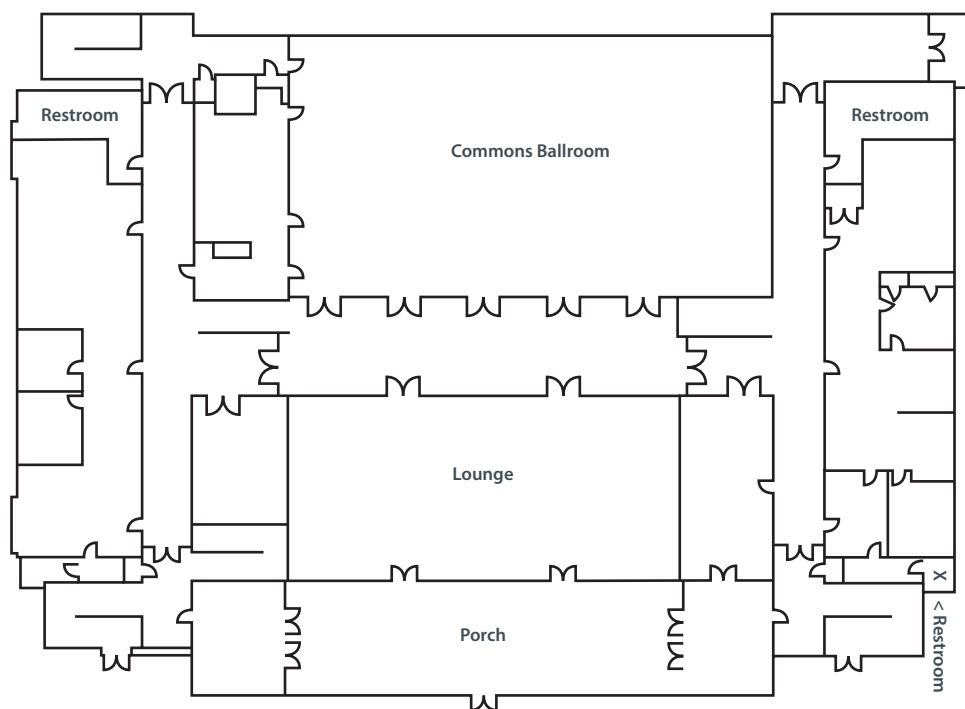
- Overnight accommodations
- Full-service conference planning
- Multi-functioning space
- Campus-setting
- Recreational facilities
- Athletic facilities
- Outdoor meeting & event space
- Adult & youth groups
- AV-equipped
- On-site dining facilities
- On-site catering
- Lot parking with over 8,300 spaces across campus with parking dependent on day, time and location of event [www.publicsafety.uni.edu/parking-division](http://www.publicsafety.uni.edu/parking-division)

#### ROOM CAPACITY

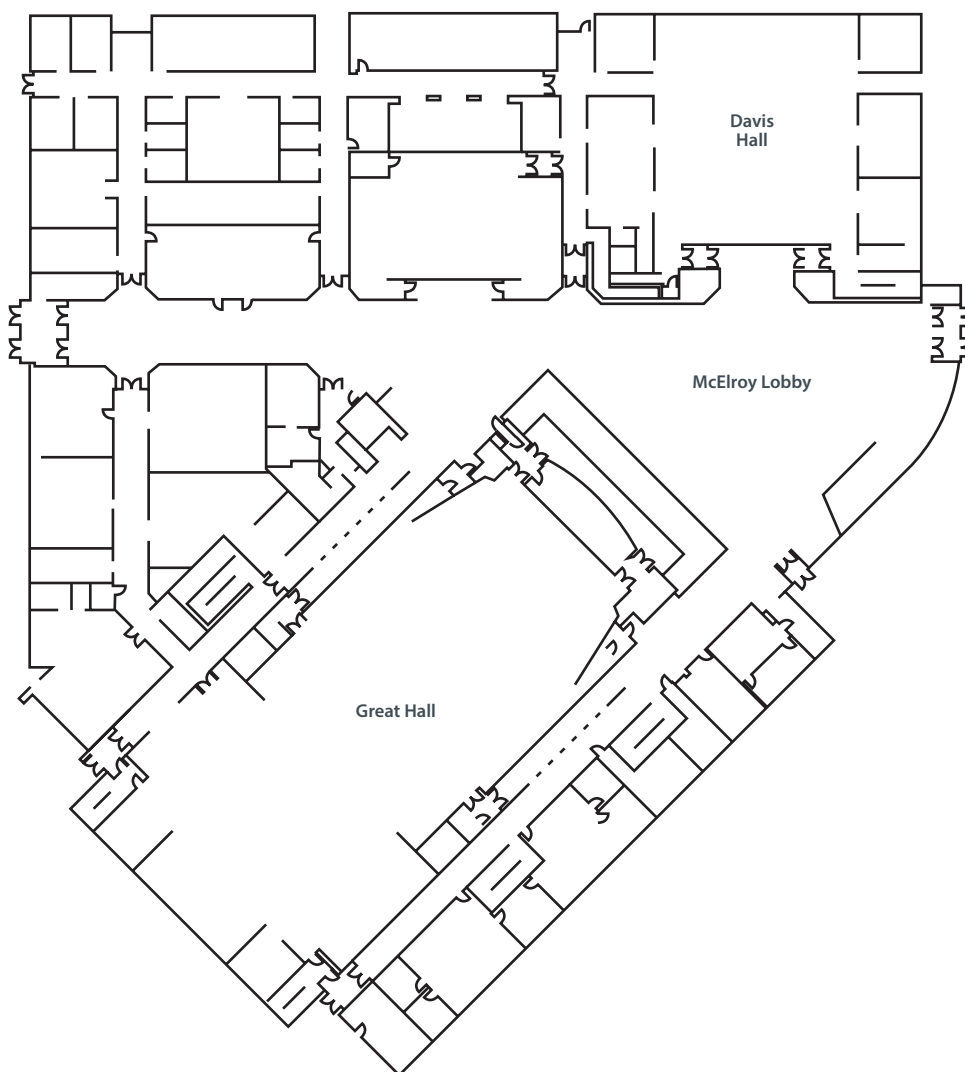
Meeting Room	Sq. Ft.	Dimension	Reception	Banquet	Theater	Classroom	U Shape
<b>Commons—</b>							
Ballroom	4,350	47 x 90	375	320	425		
Lounge	2,450	33 x 74	250	120	180		
Porch	1,500	20 x 75	w/ lounge	64	95		
<b>Gallagher—</b>							
Great Hall	1,560	40 x 39	—	—	1,650	—	—
		stage space					
Lobby	3,750	50 x 75	250	200	350	—	—
Davis Hall	2,322	43 x 54	100	100	250	100	50
<b>Maucker Union—</b>							
Full Ballroom	7,800	65 x 120	933	528	700	84	45
1/3 Ballroom	2,600	65 x 40	311	144	200	210	—
Ballroom Lobby	3,100		150	—	—	—	—
Presidential Rm	880		—	32	60	40	18
St. College Rm	960		—	32	60	32	18
Oak Room	1,340		—	64	80	48	26
Elm Room	740		—	32	50	34	18
University Rm	2,100		—	96	130	100	45
College Eye Rm	660		—	—	30	14	14
Old Gold Rm	490		—	—	26	14	14
Purple Pen Rm	470		—	—	26	14	14
Coffeehouse	7,300		1,000	—	—	—	—
Hemisphere							
Lounge	4,150		150	—	—	—	—
Plaza Conf.	550		—	—	—	—	12
Lang Hall Aud.			—	—	840	—	—



## Commons

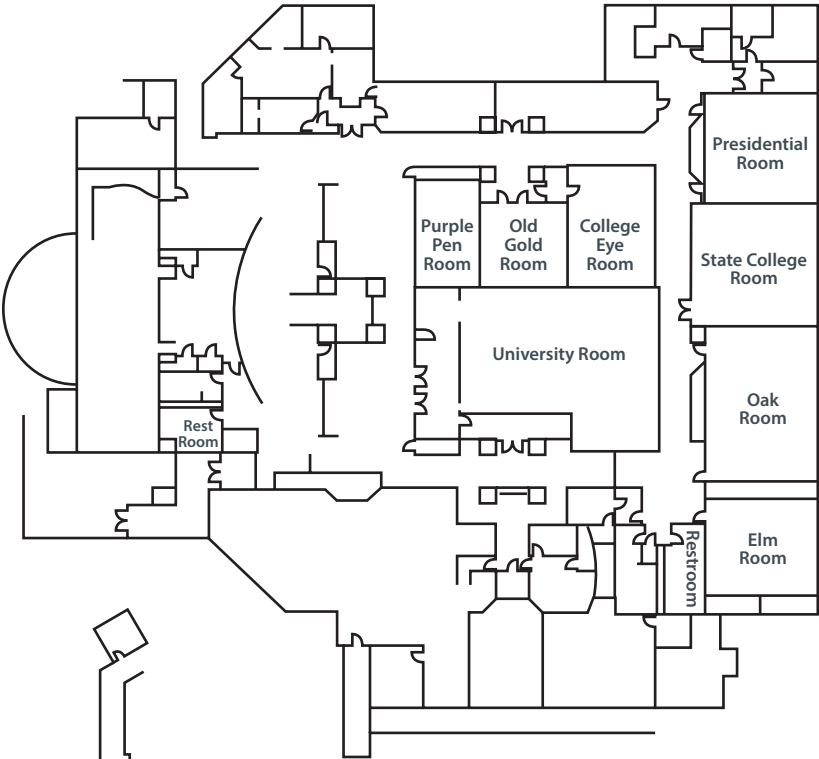


## Gallagher Bluedorn

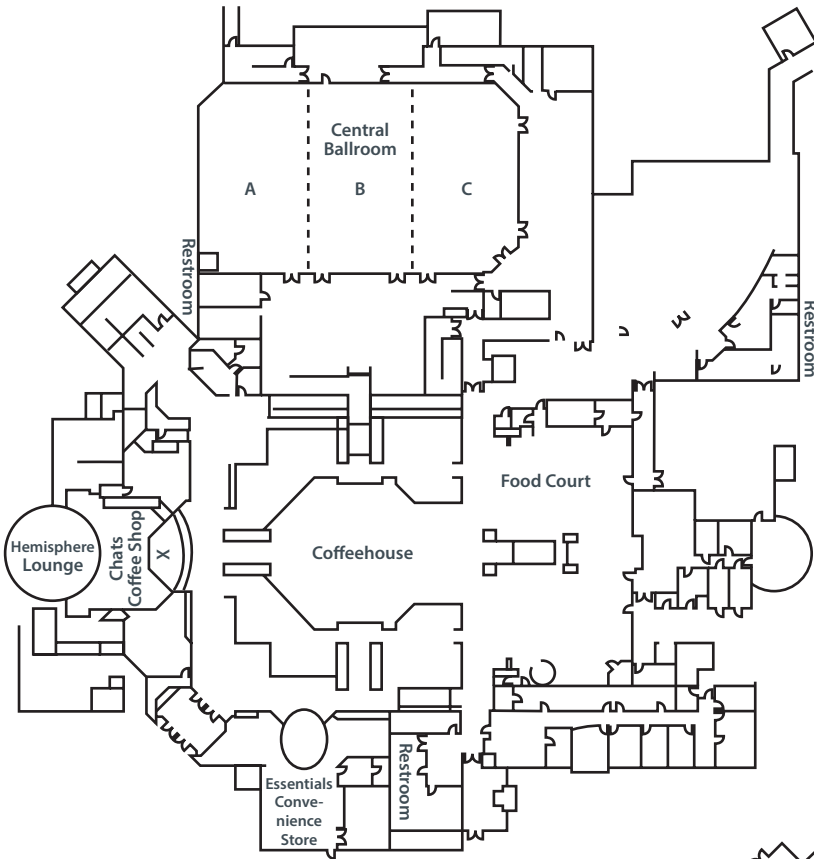




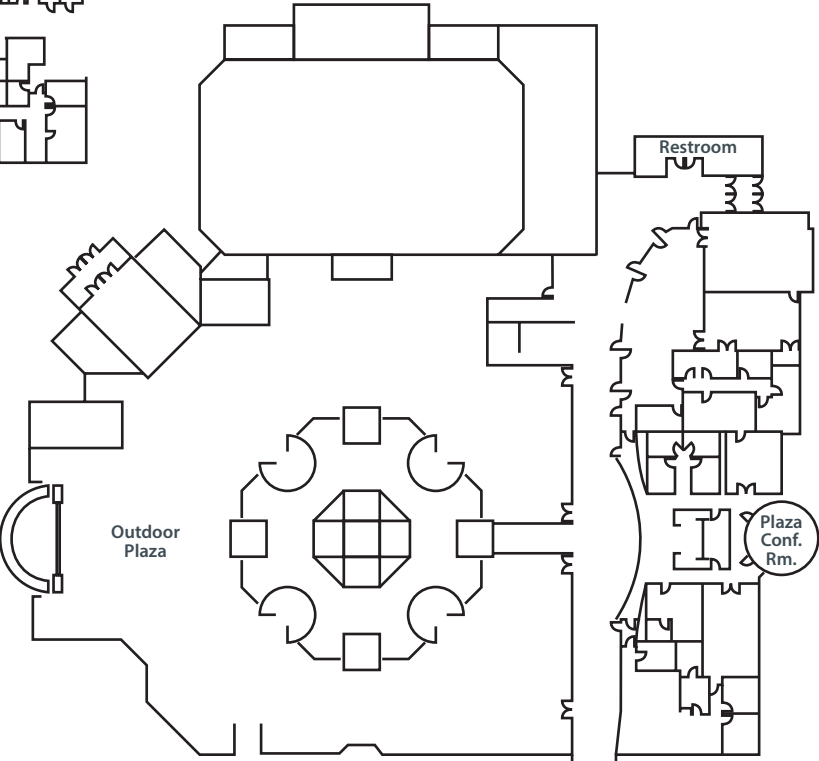
**Maucker Union  
Lower Level**



**Maucker Union  
Main Level**



**Maucker Union  
Plaza**







## Commons

### Notes:

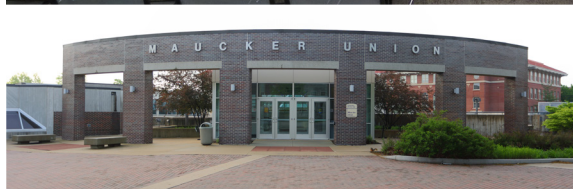






## Maucker Union

Notes:







## Gallagher & Lang Hall Aud.

Notes:

